

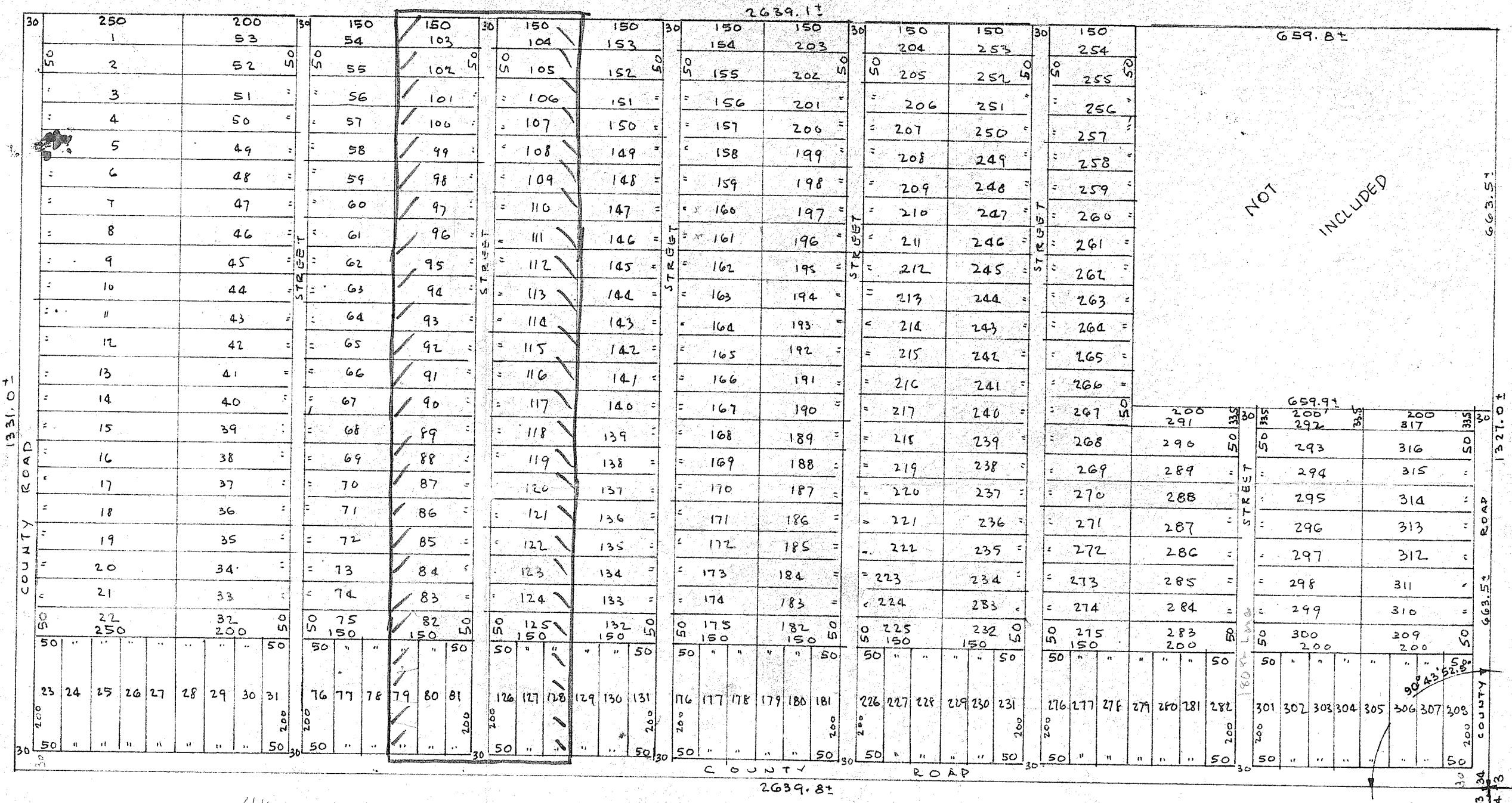
PROPOSED SUBDIVISION OF THE NW 1/4 SW 1/4 & NE 1/4 SW 1/4 SW 1/4 & SW 1/4 SW 1/4 SW 1/4 & NW 1/4 SW 1/4 SW 1/4  
SECTION 34 TWP 40 SO. RGE 42 EAST

PALM BEACH COUNTY, FLA.

JANUARY 1950

50x250: .29 A  
50x200: .23 "  
50x150: .17 "

SCALE: 1" = 100'



This is to certify that I  
have surveyed and plotted  
the attached tract of land

Arved E. Wuxett  
Registered Surveyor  
No 187

May 1950

10 Acres

NOTE: THIS ANGLE WAS  
PENCILLED ONTO PHOTOSTAT  
90° 43' 52.5"  
(WHERE SHOWN)

Indicates Area  
of Approval.

PALM GARDENS

A TRUE COPY OF AN UNIDENTIFIED PHOTOSTAT OF SUBJECT UNRECORDED PLAT

COPIED BY E. FEB. 16, 1965

E. SOKOFF & ASSOCIATES  
SURVEYORS & ENGINEERS  
186 TENTH STREET  
LAKE PARK, FLORIDA 32403  
PHONE 888-4819

A CONSIDERABLE NUMBER OF PENCILLED NOTES AND OTHER MARKINGS WERE NOT TRANSFERRED.  
DUE TO PHOTOSTAT REDUCTION, SCALE IS INCORRECT.

SAN PHOTOSTAT APPEARS TO BE PHOTO OF "FIRST ADDITION TO PALM GARDENS"  
IN TAX ASSESSOR'S OFFICE  
BEING DWG AM #16 THEREOF

SCALE:	APPROVED BY:	DRAWN BY:
DATE:		REVISED:
DRAWING NUMBER		